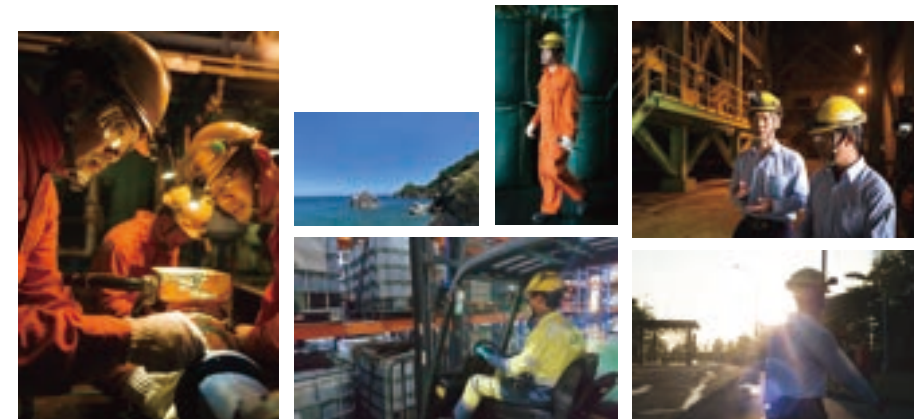


## Love

Noticed the needs of others,  
seeing own responsibility  
Proactive care,  
making the world warmer

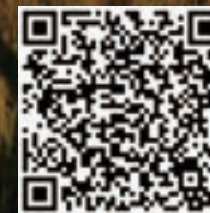


## Protect our planet Preserve the future

Onyx Ta-Ho integrates innovation and responsibility in environmental protection, striving to create a happy workplace, co-create a beautiful home, and promote ecological development. In our corporate culture, ESG has become the value of our citizenship. What we eagerly pursue is not only business performance but also the harmonious development of society and the environment. We will continue to pursue the goal of sustainable development!



達和  
環保  
Onyx Ta-Ho



Onyx Ta-Ho Environmental Services Co., Ltd.

7F, No.16-5, Dehui St., Zhongshan Dist., Taipei City 10491, Taiwan (R.O.C.)

Tel : 0225860177



# Onyx TA-HO

Established in 1992, jointly founded by **TCC** and **VEOLIA**, combining the professional expertise and extensive experience of both parent companies, with waste collection and disposal, as well as water resources management as its core services, working with the people on the path of sustainable development.

Onyx Ta-Ho Environmental Services regards solving environmental issues as its own responsibility, being the best partner of government, enterprises, and the public; supporting the circular economy, protecting natural resources, and optimizing management system.

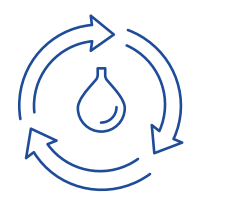
Upholding the business philosophy of "quality assurance, sustainable operation, and serving society" is our firm commitment.

## WTE PLANT



9 WTE plants in Taiwan  
2.3 M tons waste treated / year

## WWT PLANT



8 WWT plants in Taiwan  
9.3 M M³ wastewater treated / year

## WASTE COLLECTION

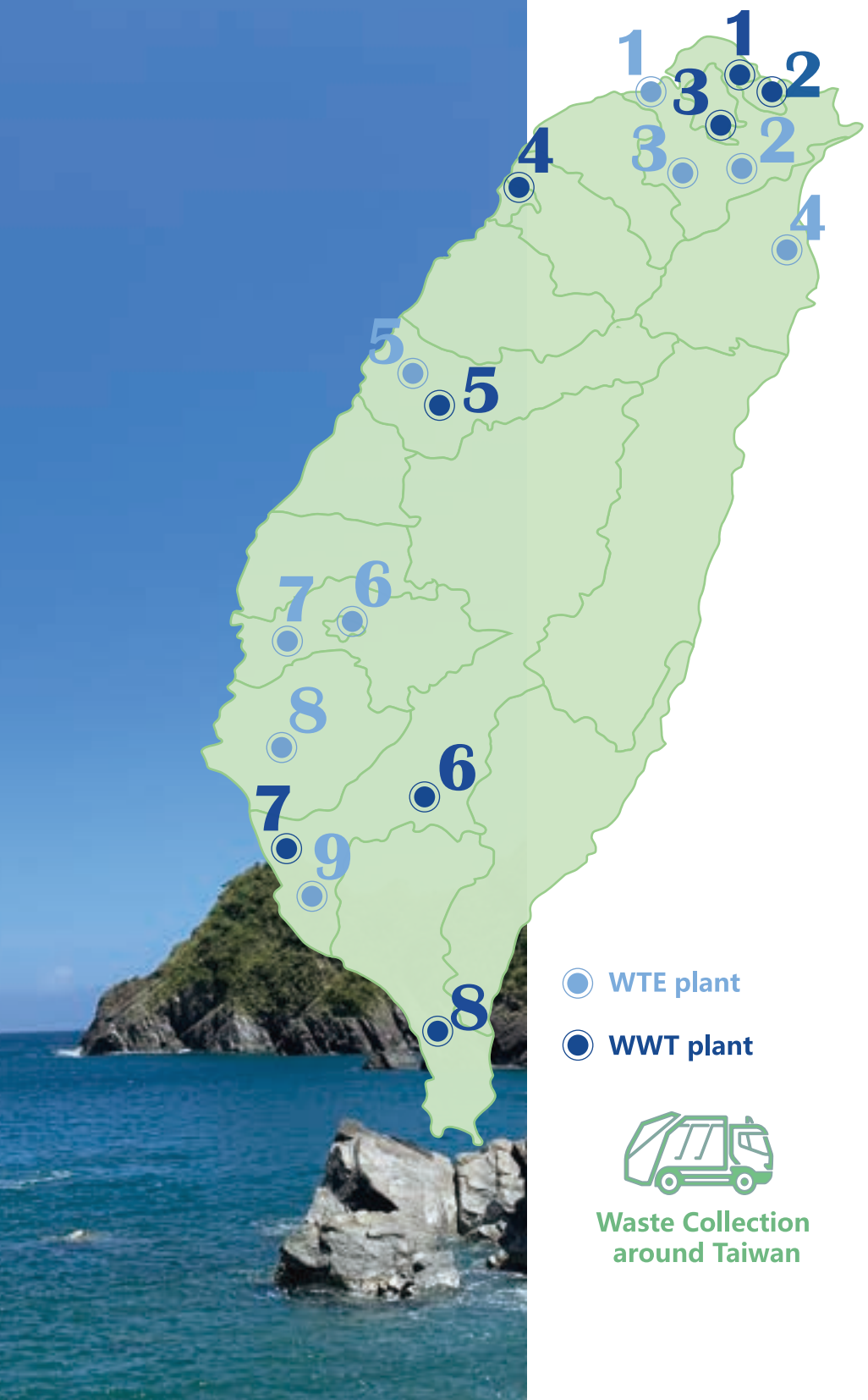


46 garbage trucks in Taiwan  
55 K waste collection and disposal / year

## WTE plant Performance

1	BaLi WTE plant	Lines Type Capacity LHV Contract Period	3 Volund 1,350 (ton/day) 2,305 (Kcal/Kg) 20 years(~2042.07.16)
2	XinDian WTE plant	Lines Type Capacity LHV Contract Period	2 Martin 900 (ton/day) 1,553 (Kcal/Kg) 20 years(~2036.11.04)
3	ShuLin WTE plant	Lines Type Capacity LHV Contract Period	3 Martin 1,350 (ton/day) 1,553 (Kcal/Kg) 20 years(~2037.07.04)
4	LiTzer WTE plant	Lines Type Capacity LHV Contract Period	2 Martin 600 (ton/day) 2,300 (Kcal/Kg) 20 years(~2026.04.06)
5	WenShan WTE plant	Lines Type Capacity LHV Contract Period	3 Volund-NKK 900 (ton/day) 1,500 (Kcal/Kg) ~2025.12.31
6	ChiaYi WTE plant	Lines Type Capacity LHV Contract Period	2 Volund 300 (ton/day) 1,350 (Kcal/Kg) ~2024.12.31
7	LuTsao WTE plant	Lines Type Capacity LHV Contract Period	2 Takuma 900 (ton/day) 2,500 (Kcal/Kg) 20 years(~2041.11.30)
8	YongKang WTE plant	Lines Type Capacity LHV Contract Period	2 Stein-Muller 900 (ton/day) 2,400 (Kcal/Kg) 20 years(~2028.02.29)
9	RenWu WTE plant	Lines Type Capacity LHV Contract Period	3 Martin 1,350 (ton/day) 2,300 (Kcal/Kg) 20 years(~2036.11.30)

# Business Map



● WTE plant  
● WWT plant



Waste Collection  
around Taiwan

## WWT plant Performance

1	DiHua Sewage Pumping and Interception Station	Owner Contract Period	Sewerage Systems Office, Public Works Department, Taipei City Government ~2028.06.30
2	LiuDu Water Resources center	Capacity Owner Contract Period	22,000 CMD Keelung City Government ~2025.12.31
3	TamSui River System Sewage Piping System	Capacity Owner Contract Period	1,320,000 CMD Water Resources Department, New Taipei City Government ~2028.06.30
4	ChuTung Water Recycling Center	Capacity Owner Contract Period	10,500 CMD Hsinchu City Government ~2027.01.07
5	WuRih brewery of Taiwan tobacco & Liquor Corp.	Capacity Owner Contract Period	5,800 CMD Taiwan tobacco & Liquor Corp. ~2024.12.31
6	ChengChing Lake Water Treatment Plant	Capacity Owner Contract Period	450,000 CMD Taiwan Water Corp. ~2025.02.11
7	DaShu water recycling center	Capacity Owner Contract Period	12,000 CMD Water Resources Department, Kaohsiung City Government ~2027.03.31
8	KenTing sewage treatment system	Capacity Owner Contract Period	Kenting: 2,000 CMD South Bay: 1,500 CMD Kenting National Park ~2025.12.31